

NETOP™ Vision6® SURF-LOCK™ Internet Control Plug-In

Netop Vision6 Surf-Lock™ is the Vision6 plug-in that makes it easy to guide, monitor and control student Web browsing. Surf-Lock lets you create a list of Web sites that are appropriate for today's assignment, and lock out all the rest. Control each student's Internet access individually, or select different site lists for groups of students. There is no better way to guide student learning on the Internet.

Block Internet access

Stop student Web surfing instantly and control Internet access for a single student or the entire class. Allow selected sites, lock out the rest. Remove the temptation of Web surfing during important lessons and discussions. Reward good behavior with expanded access.

Guide student Web use

Choose which sites are appropriate for each assignment. Surf-Lock automatically displays your approved site lists to students and blocks all other Web sites. Students just click and go. Create and save site lists using familiar browser tools.

Block Web sites stored in cache

While Surf-Lock is on, only approved Web sites can be accessed. Sites stored in cache are refreshed before viewing, and will be blocked if not on the approved list. Students cannot work around teacher controls by using their back button or browser history.

Integrated and secure

Surf-Lock works in any classroom where Vision6 is installed and plugs into the Vision toolbar for easy teacher access. Surf-Lock's robust design is secure from student workarounds and compatible with school filtering software.

KEY FEATURES

- Guide and control Web surfing
- Turn browsing on or off
- Choose appropriate sites
- Lock out inappropriate sites
- Display approved Web sites
- Control all major browsers
- Manage one, several or all computers
- Intuitive and easy to use
- Plugs-in to Vision6

"Surf-Lock has really helped me keep my students on task."

- CINDY SMITH, RIVER ROCK INDEPENDENT SCHOOL DISTRICT

FEATURES

Plugs into Vision6

Using Vision6, teachers can supervise student computer use and monitor online activity. Surf-Lock adds the capability to instantly control student Web access and guide Web browsing.

Flexible access

You decide when to allow Internet access, and when to turn it off, for one student or the entire class. Surf-Lock also lets you choose which Web sites are appropriate, guide students to those sites, and block out all the rest.

Site Lists

Guide students to appropriate sites for each class, lesson or assignment through Surf-Lock's site lists. Include just a few sites or as many as you want in each list and focus student attention on today's lesson.

Status Indicators

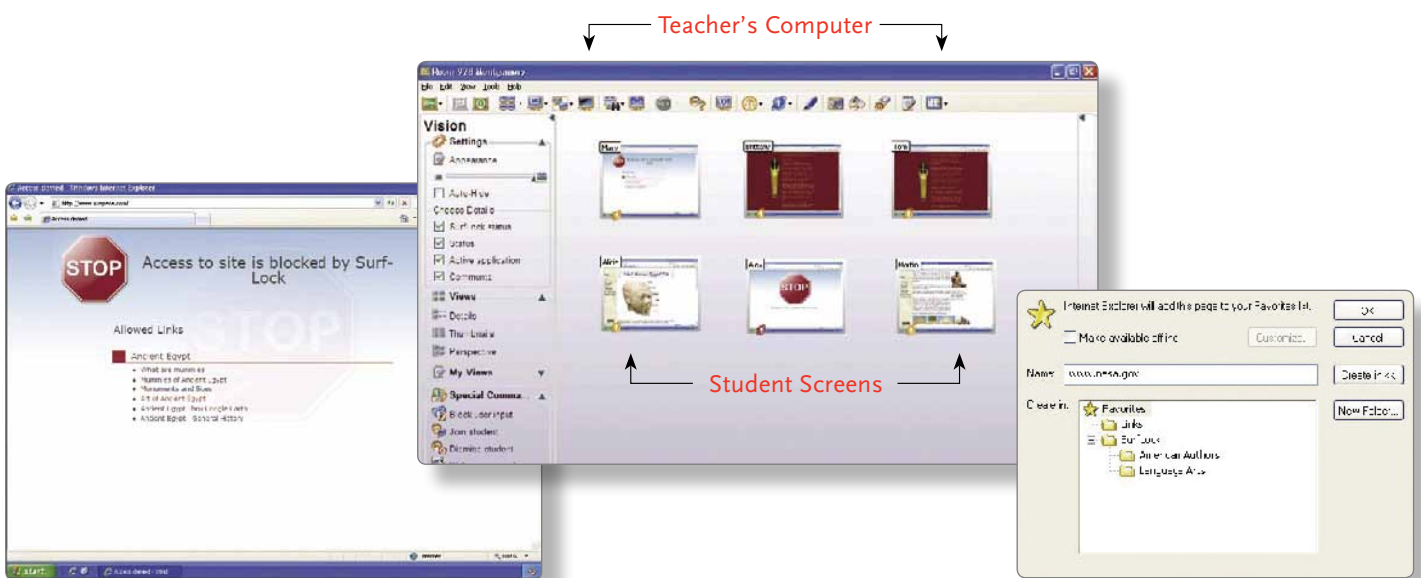
Keep an eye on where students are surfing with a dashboard on the teacher's computer. The status indicators show which students are allowed to surf (yellow) and which students are locked out of surfing (red).

Stop Sign

The Surf-Lock "Stop Sign" appears on computers accessing a non-approved Web site. Lock out distractions for one student, a group, or the entire class. Restore access as student work is completed.

Add or remove access

It's easy to add an additional site to your site list, even while right in the midst of a lesson. Update Web site lists "on the fly." Reward completed work with access to teacher-approved fun sites.



NETOP SURF-LOCK SYSTEM REQUIREMENTS

Surf-Lock is an optional plug-in to Vision6 classroom management software, that is installed as part of your Vision6 installation.

Operating System

- Microsoft® Windows® 2000 Professional, Windows XP Professional, or Windows Vista™
- 64-bit operating systems are not supported
- Vision6 supports classrooms with a combination of operating systems

Processor - Intel® Pentium® III processor or equivalent, 500 MHz or higher

Memory - 64MB RAM; 128MB and higher recommended

Video - Any 100% VGA compatible graphics adapter supported by Windows

Network

- Wired: 10Mbps full duplex; 100Mbps or higher recommended
- No restrictions on multicast or broadcast filters

- Wireless Network: 802.11b; 802.11g recommended
- Peer-to-peer name resolution must be enabled (e.g., DNS or other name server)



205 Westwood Ave, Long Branch, NJ 07740
Phone: 866-94 BOARDS (26273) / (732)-222-1511 | Fax: (732)-222-7088
E-mail: sales@touchboards.com | Site: www.touchboards.com